



Classic & Muscle

2008





Dear Trike fan!

welcome to the world of BOOM TRIKES.

We are very pleased to present our new 2008 model range, which has improved configuration, revised details and best price/performance relation. For now 18 years products from BOOM-Trikes are setting the yardstick in the Trike-scene.

A big representative survey of the „TrikeMagazin“ (february 2008) confirms our work!

Of all the 6 leading Trike manufacturers in Europe we came first in: quality, design and resale value.

Annually several hundred Trike fans fulfill their dream of their own Trike. Now this dream can also come true for you.

In front of the purchase, however, a detailed consultation is necessary. Make a draft of it at one of our competent partners whom you can find all over Europe and in most countries worldwide and combine it with a free test run.

Your Trike will be manufactured exactly according to your desires in manual work „Made in Germany“ using exclusively high-quality components. Our dealers guarantee professional care and a smooth service also after the purchase. Only so you can enjoy your yielded liberty on 3 wheels carelessly.

The entire boom team and your personal BOOM TRIKES dealer wish you much fun browsing our new brochure 2008 and of course still more fun while driving with your new Boom Trike.



Which Trike suits me?

Chopper



Low Rider



Family



Our series Chopper, Low Rider and Family essentially differ from each other by design, amount of the seats and seating position. We recommend our Chopper models up to a body size of approx. 1.75 m. The Low Rider Trikes are optimal for larger drivers due to the longer wheel base. The Family Trike is recommended for families and rental affairs.

Our vehicles with the proven boxer engines are called Classic-Trikes. On the other hand our Muscle-Trikes are equipped with modern, high performance Ford ZETEC engines.

In the meantime experienced Trikers and more and more rental stations chose our high performance Muscle models based on Low Rider and Family Trikes. Generally a trend to more engine performance and modern engine technology is to be registered.



Muscle



Classic

Chopper Classic



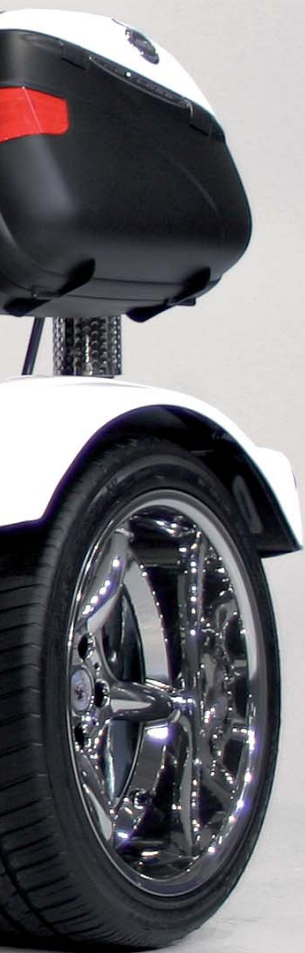
sturdy and streetwise

The **Chopper** belongs due to its simple, clear and timeless design to the favourites in the BOOM program for years. It has a full material framework and thus guarantees the best road holding of the front wheel in all situations.

Even smaller drivers can reach the pedals easily and sit comfortably on the higher seats.

Especially admired by our female drivers.

The Chopper is exclusively built as Classic Trike, thus with VOLKSWAGEN boxer engine.



Chopper 8i - Classic



Chopper classic

The Chopper series is available in 3 different versions (models). Thus the models Chopper 4i, 6i and 8i are the configurations.

The model Chopper 4i corresponds to the basic equipment. Our models 6i and 8i are for the respective price range with optimally arranged specifications.

Of course, each model can be extended individually according to your desires. All extras may be selected and combined individually.

The configuration versions are defined on the folding up page No. 18.

Colours: 4i and 6i: Choice of 4 metallic colours (p. 16),
additional colours (p. 16) with surcharge
8i: Choice of all colours (p. 16)



Chopper 4i - Classic



Chopper 8i - Classic



Chopper 6i - Classic



Low Rider Classic & Muscle



L

sporting that extra style



Low Rider 8i - Muscle

An extremely deep and comfortable seating position excels the **Low Rider**.

It is our best selling model and admired especially by experienced drivers. Outstanding handling characteristics combined with elegant design provides its completely special character. The Big block steel framework worked satisfactorily since 1995 in the hard everyday life and renting application.

Since 2005 the Low Rider is also available in the Muscle version with a modern Ford engine. A clearly increased maximum speed as well as more power in all situations of life and less consumption justify the additional price of the Ford unit in each case.

The Low Rider Muscle is a beautiful and up-to-date Trike, which unites most modern vehicle construction technology with conventional design in unique harmony.

A Trike built by Trikers for Trikers!



Low Rider *Classic & Muscle*

The **Low Rider** series is available in 3 different versions (models). Thus the models Low Rider 4i, 6i and 8i are the configurations.

The model Chopper 4i corresponds to the basic equipment. Our models 6i and 8i are for the respective price range with optimally arranged specifications.

Of course, each model can be extended individually according to your desires. All extras may be selected and combined individually.

The configuration versions are defined on the folding up page No. 18.

Colours: 4i and 6i: Choice of 4 metallic colours (p. 16),
additional colours (p. 16) with surcharge
8i: Choice of all colours (p. 16)



Low Rider 4i - Muscle



Low Rider 8i - Muscle



Low Rider 6i - Classic



Family Classic & Muscle





Family 8i - Muscle

Our Family Trikes were designed as it's name implies particularly for families and rental stations. The Family is based on the Big block framework of the Low Rider. The low seating position and the comfortable seats with side guidance submit comfortable and fatigue-free cruising. For rental stations the Family Muscle is also available with 75 HP (56 KW).

The ingenious construction of the passenger restraining bar enables a usage for one, two or three persons without alterations. With our „3-seater“ you can enjoy driving fun and pleasure together with your family or your friends.

In combination with a camper or a folding caravan, even the family vacations will be pure fun.



Family Classic & Muscle

The **Family** series is available in 3 different versions (models). Thus the models Family 4i, 6i and 8i are the configurations.

The model Chopper 4i corresponds to the basic equipment. Our models 6i and 8i are for the respective price range with optimally arranged specifications.

Of course, each model can be extended individually according to your desires. All extras may be selected and combined individually.

The configuration versions are defined on the folding up page No. 18.

Colours: 4i and 6i: Choice of 3 effect colours (p. 16), additional colours (p. 16) with surcharge
8i: Choice of all colours (p. 16)
Metallic colours aren't available.



Family 4i - Classic



Family 8i - Muscle



Family 6i - Classic

Technical data & colours

	Chopper		Low Rider			Family		
	Classic VW		Classic VW		Muscle Ford	Classic VW		Muscle Ford
	4i	6i / 8i	4i	6i / 8i	4i / 6i / 8i	4i	6i / 8i	4i / 6i / 8i
Cubic capacity (cm ³)	1584	1584	1584	1584	1596	1584	1584	1596
Power output (KW / PS)	36/48	39/53	36/48	39/53	74/100	36/48	39/53	74/100
Top speed (Km/h)	125	130	125	130	170	125	130	170
Fuel consumption (l/100 Km)	8-10	8-10	8-10	8-10	7-9	8-10	8-10	7-9
Type of fuel	95 octane (unleaded)		95 octane (unleaded)			95 octane (unleaded)		
Fuel capacity (Liter)	38	38	38	38	38	38	38	38
No. of seats	1-2	1-2	1-2	1-2	1-2	1, 2 o. 3	1, 2 o. 3	1, 2 o. 3
Length (mm)	3360	3360	3555	3555	3555	3555	3555	3555
Width (mm) (depending on tyres)	1780-1830	1780-1830	1780-1830	1780-1830	1780-1920	1780-1830	1780-1830	1780-1920
Height (mm)	1440	1440	1440	1440	1440	1480	1480	1480
Dry weight (Kg*)	620	620	700	700	700	700	700	700
Max. weight, laden (Kg)	1000	1000	1000	1000	1000	1000	1000	1000
Max. load (Kg*)	380	380	300	300	300	300	300	300
Max. towing capacity (Kg*)	310	310	350	350	350	350	350	350
No. of gears (forward / reverse)	4/1	4/1	4/1	4/1	4/1	4/1	4/1	4/1
Suitability	without limitation							
Body size	till 175 cm		from 175 cm			from 170 cm		

* (approx.), depending on vehicle specifications

Body work colours: (electively, depending on model)



blue metallic



anthracite metallic



silver metallic



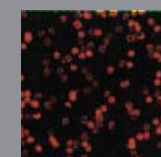
red metallic



black / green effect



black / blue effect



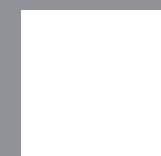
black / red effect



black plain



red plain



white plain



yellow plain



black / black



black / grey



black / beige

Colours seats, in series: (electively)

Extensive, standard configuration of the models Chopper, Low Rider and Family

Classic & Muscle

Engine	Classic: 1,6 l. /36 KW (48 HP) new fuel-injected VW boxer engine with catalytic converter ; Muscle: 1.6 l Ford-Zetec-engine, 16V 74 KW (100 HP)
Gearbox	VW-semi trailing transmission, 4 forward, 1 reverse gear
Exhaust system	4 into 1 polished stainless steel exhaust system; Muscle: 4 into 2, polished stainless steel
Framework, chassis and attachments	New alloy semi trailing link axle with adjustable suspension
	Passenger retaining bar black, plastic coated (Family)
	Fully adjustable pedals & footrest mountings, black, plastic coated
	Bumper ø 42 mm, black, plastic coated
	Luggage rack, black with passenger grab rails and preparation for pannier set
	Koni adjustable suspension, standard
Fork	Comfort fork, polished stainless steel 48 mm
	Handlebars ø 22 mm, chromes
Wheels + tyres	170/60-17 tyre mounted on 4.50" chromium alloy rims, SLC, hole pattern
	295/50-15tyre mounted on 10" chromium alloy rims, SLC, hole pattern
Brakes	Front disc brake
	Self adjusting rear disc brakes
	Integral braking system
	Brake fluid indicator
Electrical system / lighting equipment	Instrument unit with digital speedometer, tachometer, fuel gauge and warning light panel
	Electively: 2 add-on headlights (Dummy), standard mounted on fork with leather tool roll or cockpit fairing with chrome screens
	LED taillights
	Waterproof fuse box
	Handbrake-actuated engine kill switch
	Three-phase generator
Paintwork	Depending on model and configuration version (see pages 6,10,14 and 16)
Fuel tank	38-litre fuel tank,
Active safety package „pro safe“	Automatic brake balance, front & rear wheels
	Braided brake lines
	Warning waistcoat, warning triangle and first aid kit
Comfort package	1 topcase 46 litres (painted), removable
	Liftomatic
	Toolkit
	Passenger arm rests, leather
	Passenger headrest
	12 V power outlet for navigation system
	Driver and passenger seats with side guidance

Differences of the models 2008

Optional extras of special models 6i compared to 4i

- Exhaust system Trucker slim line or Dragster, polished stainless steel; Muscle: 4 in 2 stainless steel*
- Adjustable pedals & footrest mountings, polished stainless steel*
- Bumper ø 60 mm, polished stainless steel*
- Axle covers polished stainless steel*
- Luggage rack passenger grab rails and preparation for pannier set in polished stainless steel*
- Adjustable suspension "Bilstein Premium"*
- Stabiliser bar
- Comfort fork ø 60 mm in polished stainless steel*
- Handlebars ø 30 mm in polished stainless steel*
- 200/50 x 17 tyre mounted on 5,5" chromium alloy rim, SLC, Shark-Design*
- 295/50 x 15 tyres mounted on 10x15 chromium alloy rims, SLC, Shark-Design*
- Electively: 2 add-on headlights, big (6,5") mounted on fork with leather tool roll or cockpit fairing with chrome screens
- Oil temperature set in chrome ring
- Passenger retaining bar, stainless steel (Family-models)*

Remark: * means: the optional extra always considers the omission of the standard configuration.
Example: bumper ø 60 mm made of polished stainless steel
instead of bumper ø 42 mm black, plastic-coated

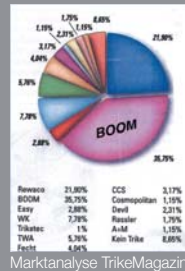
Optional extras of special models 8i compared to 4i

- 1,6 l. /39 kW (53 HP) new fuel-injected VW boxer engine with catalytic converter (increased efficiency due to exhaust system); Muscle: 1.6 l Ford-Zetec-engine, 16V 74 KW (100 HP)*
- New semi-trailing-link-transmission (VW) - 4 forward, 1 reverse gear*
- Exhaust system Trucker slim line or Dragster, polished stainless steel; Muscle: 4 in 2 stainless steel*
- Adjustable pedals & footrest mountings, polished stainless steel*
- Bumper ø 60 mm, polished stainless steel*
- Axle covers polished stainless steel*
- Luggage rack passenger grab rails and preparation for pannier set in polished stainless steel*
- Adjustable suspension "Bilstein Premium"*
- Stabiliser bar
- Comfort fork ø 76 mm in polished stainless steel*
- Extreme handlebars ø 38 mm in polished stainless steel or Fighter-handlebars ø 42 mm*
- 200/50 x 17 tyres mounted on chromium alloy rims, SLC, Shark-Design*
- 295/35 x 18 tyres mounted on 11x18 chromium alloy rims, SLC, Shark-Design*
- Electively: 2 add-on headlights, big (6,5") mounted on fork with leather tool roll or cockpit fairing with chrome screens
- Jet-Light-System*
- Oil temperature set in chrome ring
- Clock set in chrome ring
- Voltmeter in chrome ring
- Oil pressure set in chrome ring
- 4 series colours + 7 special colours, electively * (p. 16)
- 38 litre fuel tank, stainless steel*
- Leg protector bar and luggage rack ø 60 mm
- 2 side suit cases, painted (Chopper / Low Rider)
- 2. topcase 46 ltr. (Family models)
- Passenger restraining bar, stainless steel (Family-models)*
- Passenger back rest Family, polished stainless steel (Family models)

A trike from the market leader - a safe investment

1. A Trike from the market leader is always a good and safe investment

That meanwhile (status Febr. 2007) each second Trike sold in Europe, is a Boom Trike, has its reasons. Over 9000 Boom Trikers confirm our work.



2. Projection by technique, security and travelling comfort

BOOM TRIKES builds on solid construction of vehicles technique. Like that fuel injection engines, fresh from the factory are just as natural with all models as the new aluminum chassis that, in connection with standard aluminum wheels, reduces the unsprung masses by 50 % and improves the travelling comfort and security up to 100 %. In series with all Boom Trikes.



3. High-quality and extensive standard equipment

Waterproof and removable topcases, aluminum chassis, aluminum wheels, broad tires, front and rear disk brakes, handbrake stop, extensive stainless steel configuration and much more with all models already in the basic equipment in series. The patented comfort fork as well as enough weight on the front axle ensure that you do not lose the road grip.



4. 18 years experience in the construction of trikes and vehicles

guarantee a matured and reliable technique, which means security and driving fun at the same time from the outset.



5. The required range

We offer the suitable Trike for each customer. With our 6 entirely different Trikes with automatic transmissions or manual stickshifts, we have the suitable Trike in the supply for each taste and purse.

Fun



Chopper



Low Rider



Family



V2



Fighter X11



6. On the tracks of the world's hardest Rallye - the Paris-Dakar - test travels in the desert of Morocco.



Thus original develops. With BOOM TRIKES coworkers and dealers, who are obligated regularly as test drivers, we guarantee you a name-brand trike, built by Trikers for Trikers.

7. Largest and region wide Trike dealer network



Optimal service care also during vacation travels in European foreign countries due to approximately 100 authorized BOOM-TRIKES dealers.

8. Visions and competence



Innovationen and competence in the entire spectrum of the construction of vehicles -... typically BOOM

9. Quality

The quality proof: DIN ISO 9001 (development and series production) since 1997.



10. European approval

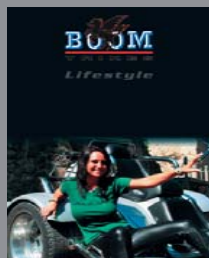
All Boom Trikes are delivered with European approval Advantage: High stability of value and sales possibilities of your used trike in the European foreign countries. (partial higher used vehicle prices)



Accessories & Lifestyle



Further Lifestyle articles in our current Lifestyle catalogue



Request for free!

Fascination BOOM Trikes



Take on the triking experience

Leave your suit and tie at home, put on your leathers, get on your BOOM trike and experience a different world. Whether man or woman, manager or employee, young or old, single or family man, leave your daily grind behind. Feel the wind as you glide in the comfort of your rider's saddle and let the freedom of three wheels carry you along.

The triking experience is something unique, and everywhere that trikers gather, they are secure in the knowledge that they own and share something very special. Whatever else you own and do in your daily life and in your job, ...it doesn't matter when you're out triking. What counts is enjoying that unique triking feeling and sharing something that only the triking experience can give.

Test ride a BOOM trike. Pure triking. It's a different world.

Additional information at www.boom-trikes.eu





BOOM TRIKES Vehicle Constructions Ltd.
Baechinger Straße 7
89567 Sontheim Ortsteil Brenz
Germany

Phone	+49 (0) 73 25 / 96 11 - 0
Fax	+49 (0) 73 25 / 96 11 - 44
Email	info@boom-trikes.eu
Internet	www.boom-trikes.eu

Your BOOM-Partner:

This brochure BOOM TRIKES 2008 is valid after 01.03.2008.

Protective charge is € 3,00.

We reserve the right to make any alterations to technical specifications and colours. No liability for misprint.